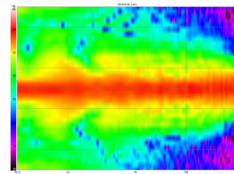
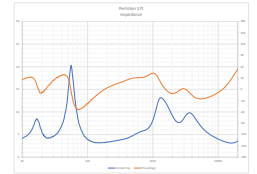


Horizontal Directivity



Vertical Directivity



Impedance

MODEL S7t



TECHNICAL SPECIFICATIONS



Our most advanced speaker to date. When the highest fidelity is what matters most. Featuring our proprietary DPC-Array controlling Mid/High frequencies, centered by our finest 28mm Beryllium dome and dual 28mm TPCD ultra-lightweight domes. All transducers are developed ground up by our engineers – bringing decades of research, culminating in this world class design. We teamed up with companies in the USA and Sweden to bring modern material science to hi-fi. Utilizing advanced Comsol acoustical modeling, our DPC-array is the result of 18 months of painstaking simulations and prototyping. The result is one of the most technologically advanced loudspeakers available. This new tweeter/waveguide DPC-Array delivers amazing accuracy, smoothness, and directivity control to handle the critical vocal range and delicate treble. All S-Series speakers share the same DPC-Array and benefit from our unique timbre matching technique across the entire series. Custom bass drivers made from thin-ply carbon diaphragms (TPCD) can be configured as bass reflex or acoustic suspension and adjusted for listener preference. True full range performance with unparalleled dynamic range and musical finesse. The PerListen S-Series speakers also have the distinguished honor to be the world's first and only loudspeakers to be certified for THX Dominus - their highest rating. A mark of achievement.

BASIC

Dimensions (HxWxD)
1295 x 240 x 400mm
51.0 x 9.5 x 15.7"

Weight
55.7 kg (122.5 lbs.)

Available finishes
Piano black, Gloss white
Special Edition Veneers

TECHNICAL

Enclosure Alignment
4-way bass reflex / acoustic suspension

Driver complement
DPC-Array: 28mm Beryllium
28mm(2) Textreme TPCD
Woofers: 180mm(4) Textreme TPCD

Sensitivity
92.2dB / 2.83v / 1.0m

Impedance
4Ω nominal / 3.2Ω min

Response Linearity
80 - 20kHz +/-1.5dB window

Frequency Response (-10dB)
Bass reflex: 22 - 37kHz
Acoustic suspension: 32 - 37kHz

Typical In Room bass extension
Bass reflex: 16Hz
Acoustic suspension: 23Hz

Recommended Amplifier Power
100 - 600W RMS

SPL capability (100-20kHz)
120.0dB peak
117dB peak <2% - 2nd, 3rd Harmonics

Certification
THX Dominus



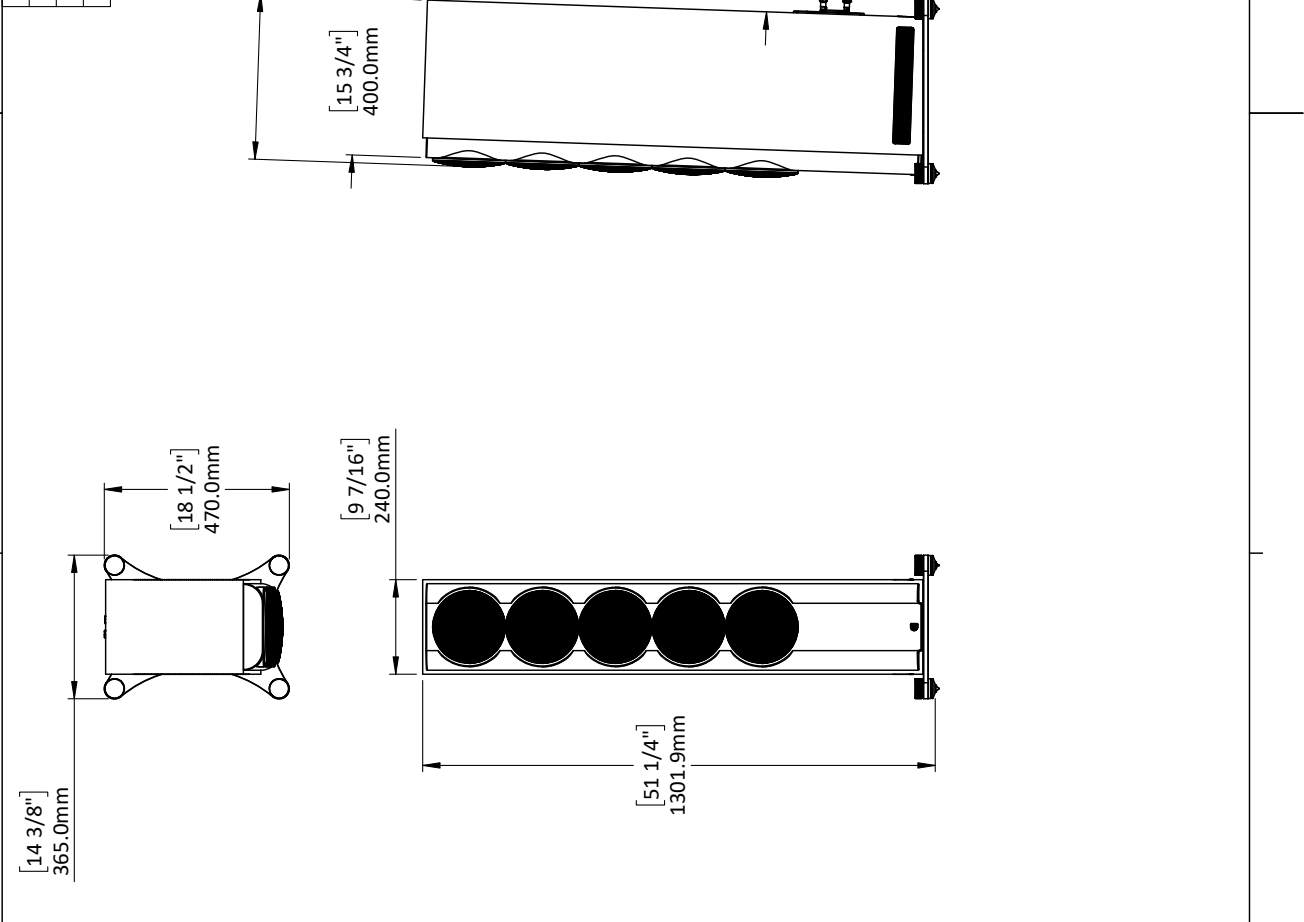
DPC Array
Directivity pattern control
*USA Patent pending



TPCD
Thin Ply Carbon Diaphragms

4 3 2 1

REVISIONS		
REV.	DESCRIPTION	DATE
1	Initial Release	3/30/2021
2	Added Grill dimension and terminal dimensions	4/1/2021



D C B A

NAME	DATE	 <small>PERLISTEN</small> <small>PERLISTEN AUDIO LUCIS</small>
TITLE:		Sheet 1
SIZE	DWG. NO.	REV
A	PERLISTEN-S7t_Architectural	2
SCALE: 1:16		SHEET 1 OF 1

2 1

PROPRIETARY AND CONFIDENTIAL
 THE INFORMATION CONTAINED IN THIS DRAWING IS THE SOLE PROPERTY OF PERLISTEN AUDIO LUCIS, AND IS TO BE KEPT IN CONFIDENTIALITY. NO REPRODUCTION OR TRANSMISSION OF PERLISTEN AUDIO LUCIS DRAWINGS ARE ALLOWED WITHOUT THE WRITTEN PERMISSION OF PERLISTEN AUDIO LUCIS.
DRAWINGS ARE IN MILLIMETERS UNLESS OTHERWISE NOTED.